

1- Main Menu

1.1. File

1.2. Settings

- 1.2.1. Controls
- 1.2.2. IP Switcher
- 1.2.3. File Manager Service
- 1.2.4. Logger
- 1.2.5. Disable Preview
- 1.2.6. Email Settings
- 1.2.7. Network Transfer
- 1.2.8. Playlist Editor
- 1.2.9. Subtitle Devices
- 1.2.10. ENET Server
- 1.2.11. Others

1.3. View

- 1.3.1. Full Screen
- 1.3.2. Smart Screen
- 1.3.3. Preview
 - 1.3.3.1. Normal Preview
 - 1.3.3.2. Big Preview
 - 1.3.3.3. Popup
 - 1.3.3.4. No Preview

1.4. Help

- 1.4.1. About
- 1.4.2. License

2. Client Control Interface

2.1. Playlist Field

2.2. Usage of Control Menu

2.3. Time Monitoring

Easy Net Control is a convenience application for user to allow remote operation of controls of Easy Media Suite products (Easy Onair, Easy CG Plus, etc.)

1. Main Menu

1.1. File->Save

This menu item allows user to save the program's settings before closing it. When Easy Net Control is reopened, the settings automatically are loading.

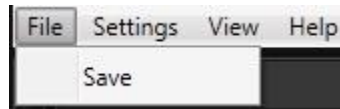


Image 1

Save menu item appears in the File menu.

1.2.1. Settings->Controls

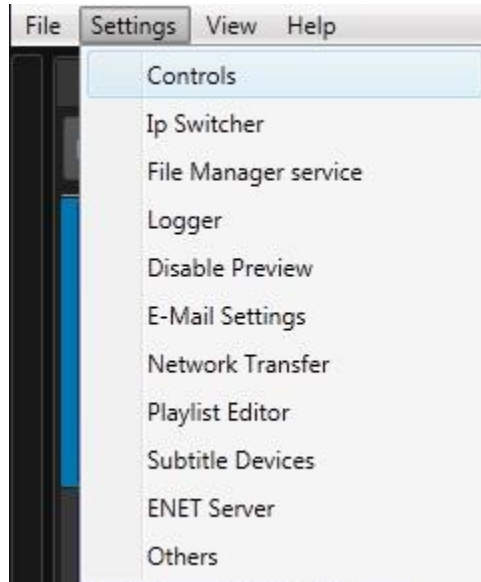


Image 2

Controls menu item appears in the Setting menu.

This menu item allows user to set controls with Backup, Slave, Matrix Physical In, Matrix After crash and Backup Link options for Easy Onair Clients. These options appear when user select client and click right on controls window.

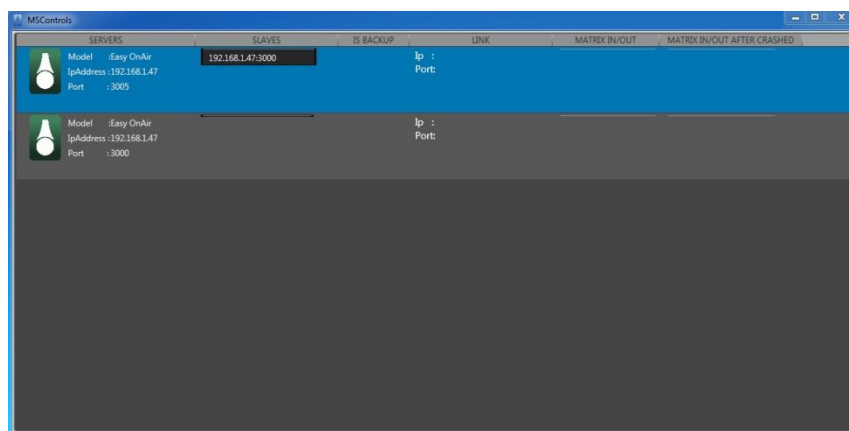


Image 3

Controls window appears when user clicked control menu item.

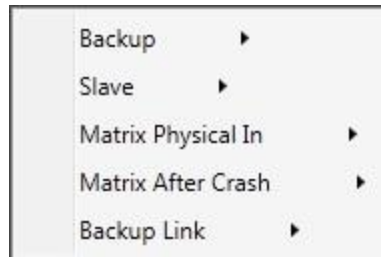


Image 4

These options appear when user select client and click right on controls window.

1.2.5. Settings->Disable Preview

This menu item allows user to disable preview of Easy Onair clients.

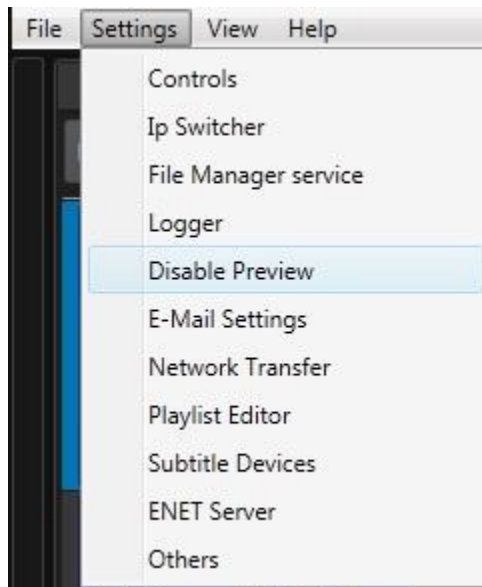


Image 5

Disable Preview menu item appears in the Setting menu.

1.2.6. Settings-> Email Settings

This menu item allows user to add the information of Mail account and any SMTP (outgoing) server.

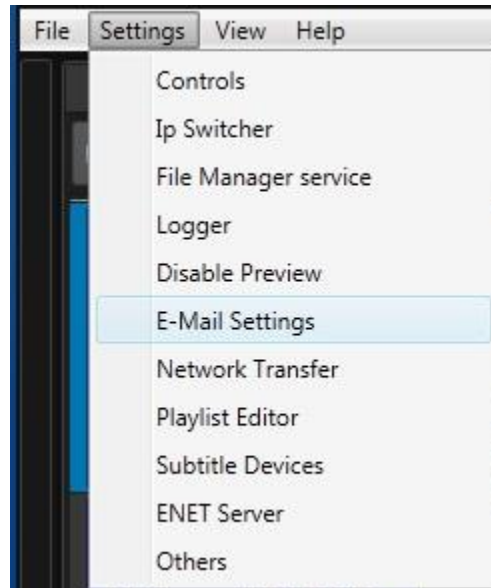


Image 7

Email Settings menu item appears in the Setting menu.

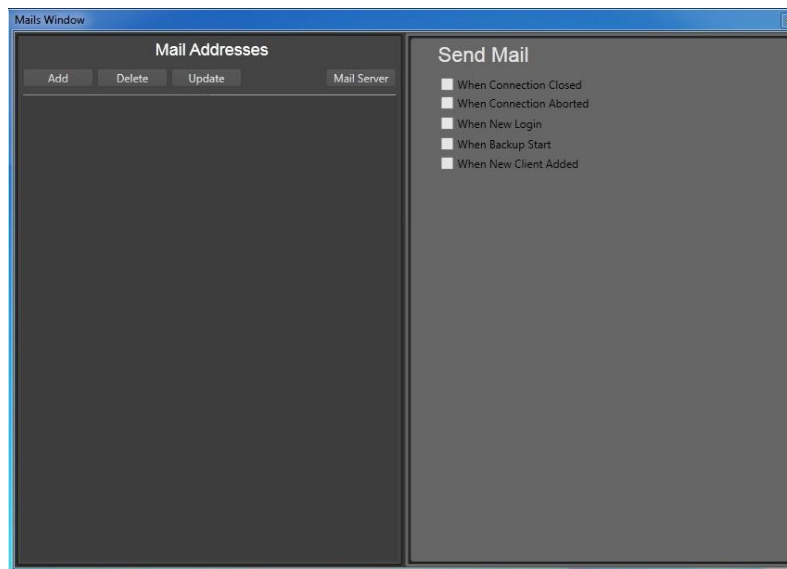


Image 6

Mails Window appears when user clicked Email settings menu item in the Setting menu.

To add an email account please click Add button, fill mail address and click OK button.



Image 7

MailBox window appears when user click Add button on Mails Window.

User can configure the account for SMTP server over Mail Server window.

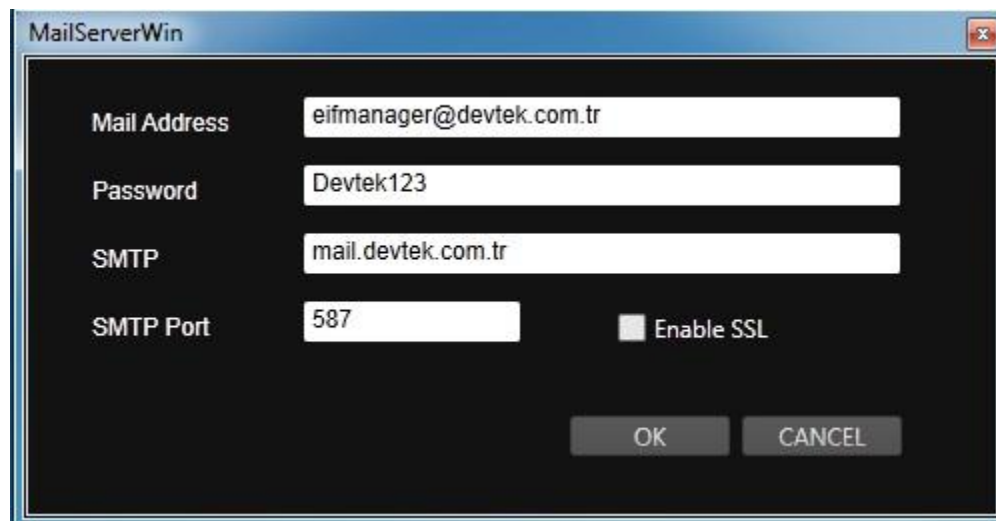


Image 8

Mail Server window appears when user click Mail Server button on Mails Window.

Easy Net Control has ability to send email notifications. These notifications showed under Send Mail page on Mails Window. *Please look at Image 6.*

1.2.7. Settings->Network Transfer

When system configuration has network-attached storage (NAS) to be used location of media, the playlist items can be transferred to local system. If the item on playlist is on local system, Easy Onair will play the item over local system. User can also specify file transfer speed, buffer size, etc. *Please look at Image 10.*

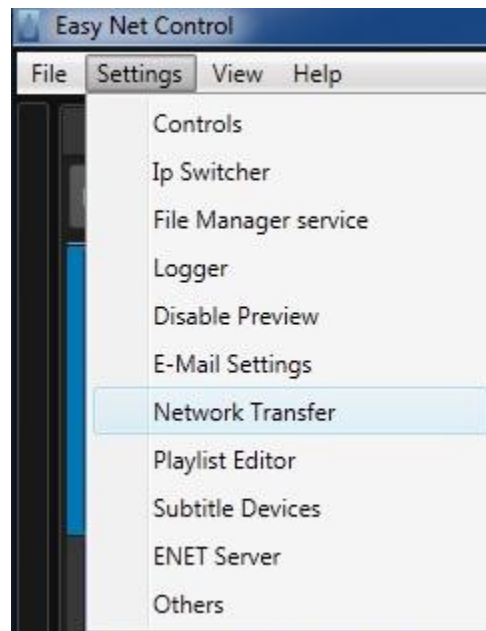


Image 9

Network Transfer menu item appears in the Setting menu.

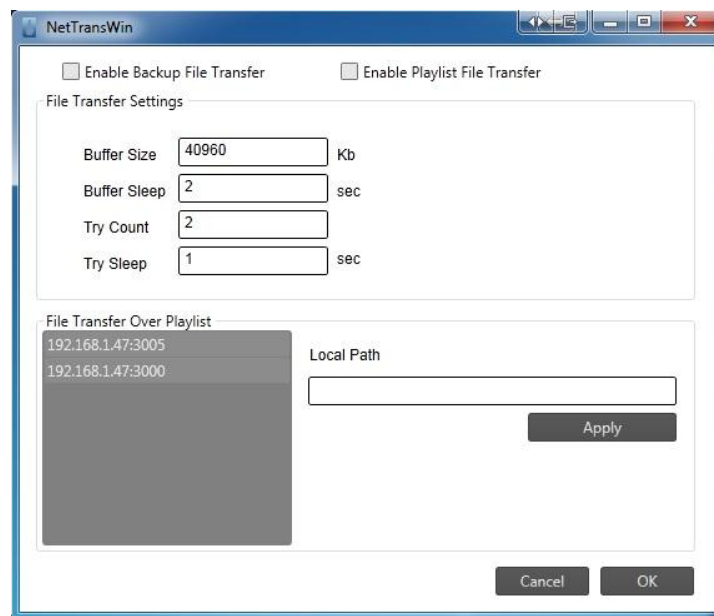


Image 10

Net Transfer window appears when user clicked Network Transfer menu item in the Setting menu.

1.2.8. Settings-> Playlist editor

This menu item allows user to set the location of playlist pool folder. Playlist pool folder should be shared. Database IP field is for Media Database server IP address. When Easy Playlist editor application will be used, Playlist Editor Page should be specified.



Image 11

Playlist editor window appears when user clicked Playlist editor menu item in the Setting menu.

1.2.9. Settings-> Subtitle Device

This menu item allows user to set IP address of Subtitle devices in case of the system support subtitle devices.

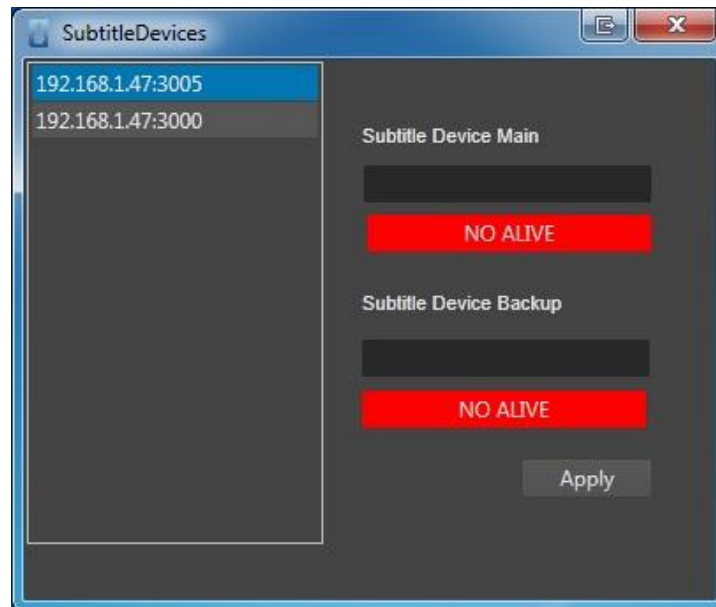


Image 12

Subtitle Device window appears when user clicked Subtitle Device menu item in the Setting menu.

1.2.10. ENET server

This menu item allows user to set Port of Easy Net Control to communicate with the other Easy Media Suite products over TCP/IP. ENET Server should be activated via Listen Server button.



Image 13

ENET server window appears when user clicked ENET server menu item in the Setting menu.



Image 14

Activated ENET Server

1.2.11. Settings->Others

This menu item allows user to specify some of connection properties of clients. These are:

- Enable/Disable Connection Controller (When this option is disabled, user will open Easy Net Controller clients manually after closing Easy Net Controller.)
- Connection controller tick intervals for clients
- Maximum item count in the playlist in a packet which will send Easy Onair. This option is to be valid when the system supports Easy Playlist Editor.



Image 15

Others window appears when user clicked Others menu item in the Setting menu.

1.3. View

1.3.1. Full Screen

This menu item allows user to maximize size of Easy Net Controller Interface.

1.3.2. Small Screen

This menu item allows user to minimize size of Easy Net Controller Interface.

1.3.3. Preview

1.3.3.1. Normal Preview

This menu item allows user to change size of preview screen.

1.3.3.2. Big Preview

This menu item allows user to increase size of preview screen.

1.3.3.3. Popup

This menu item allows user to open preview screen as popup.

1.3.3.4. No Preview

This menu item allows user to close preview screen.

1.4. Help

1.4.1. About

Information about Easy Net Controller version

1.4.2. License

License Window produce license key to activate Easy Net Controller license. Activation license file can import via Import License button.



Image 16

License window appears when user clicked License menu item in the Help menu.

2. Client Control Interface

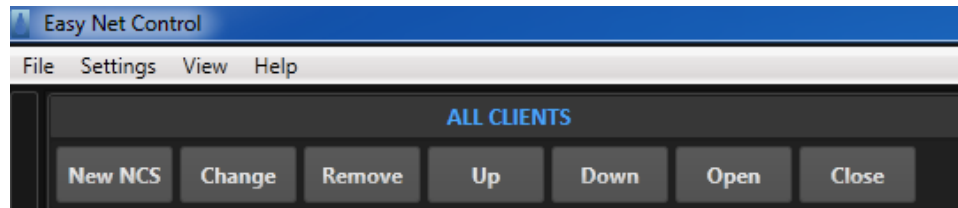


Image 17

Clients can be added, changed, removed, closed or changed their position over here.

New NCS is used to add new Easy Net Control client. Press **New NCS** button and NCS window will appear. Fill IP address and port of client then press Ok button.

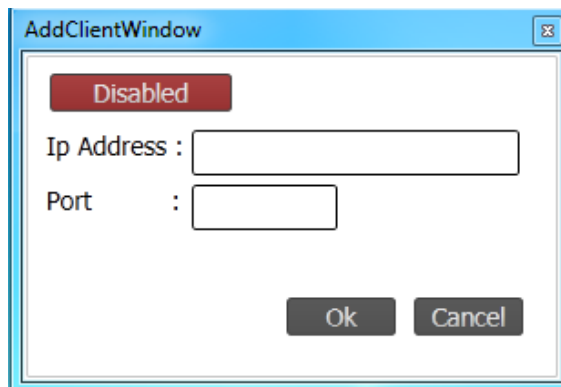


Image 18

NCS window appears when user clicked New NCS button.

When user wants to change IP address and/or port of client, it can be done via pressing **Change** button.

Up and **Down** buttons are used to change client's position on Easy Net Control client list.

Close button is used to close client connection, after press **Open** button, it will open client connection again.

Remove button is used to remove client from Easy Net Control.

2.1. Playlist Field

Playlist field appears if client type is Easy Onair application. When an Easy Onair client is added into Easy Net Control, Easy Onair client's playlists will appear on playlist field. A playlist can also be added, inserted and removed via Easy Net Control. Please right click on Playlist page to see Insert, New, Remove items on Image 19.

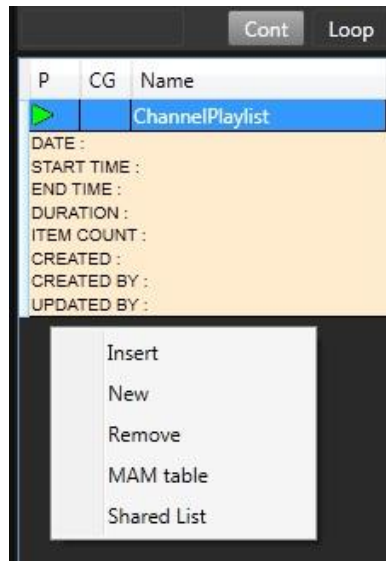


Image 19

User can control Easy Onair client's playlists via Easy Net Control. These controls are Play, Pause, Stop, Jump, Next and Play Next.

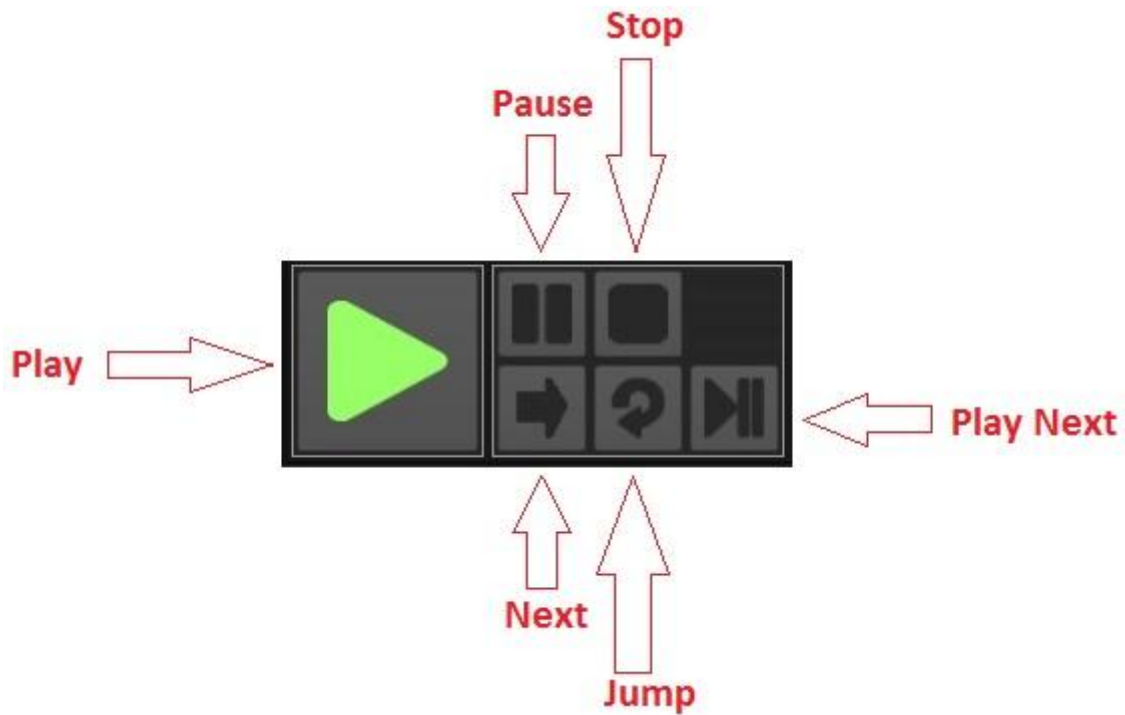


Image 20
 Playlist Control Menu

Cued video files on playlist are played by pressing Play ► button on the control menu, or clicking Play this on right-click menu of video file.

Video files on playlist are removed by clicking Remove on right-click menu of video file in content field.

2.2. Usage of Control Menu

- **Play** : Plays a chosen or cued video file.
- ▢▢ **Pause** : Pauses onair video file.
- **Stop** : Stops onair video file.
- ➡ **Next** : Jumps to next file.
- ↻ **Jump** : Jumps to chosen file.
- ▢▢ **Cue** : Cues chosen file.

2.3. Time Monitoring

The main clock represents remaining time of video file as shown with red font as shown on Image 21.

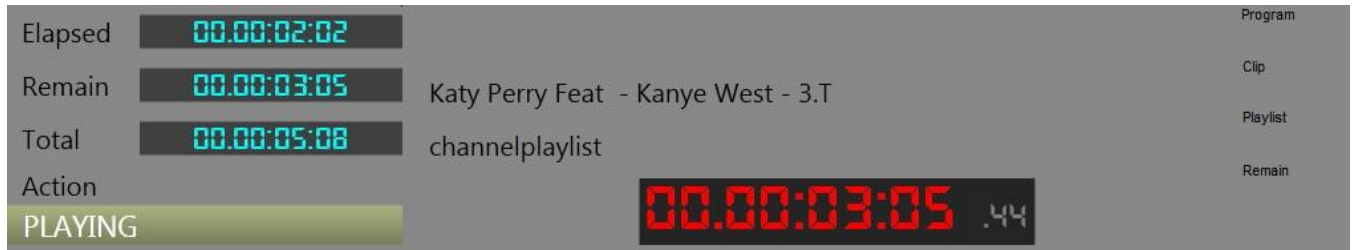


Image 21

Elapsed counter represents elapsed time of video file as shown on the upper left side on Image 21.

Total counter represents total duration of video file as shown on the lower left side on Image 21.

Clip label represent the name of video file playing on Easy Onair at the moment as shown on the right side on Image 21.

Playlist label represent the name of playlist playing on Easy Onair at the moment as shown on the right side on Image 21.